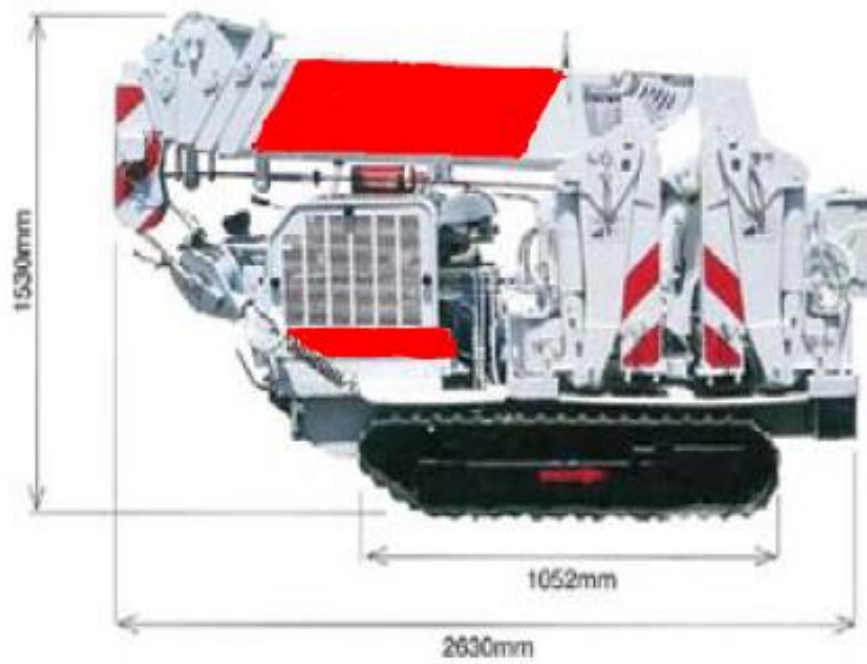


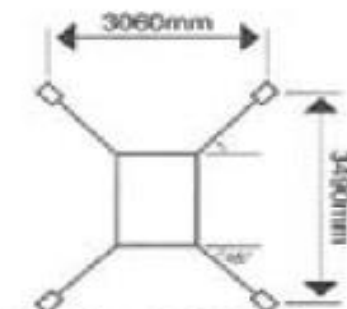
# CRANE SERVICES

## UNIC 255





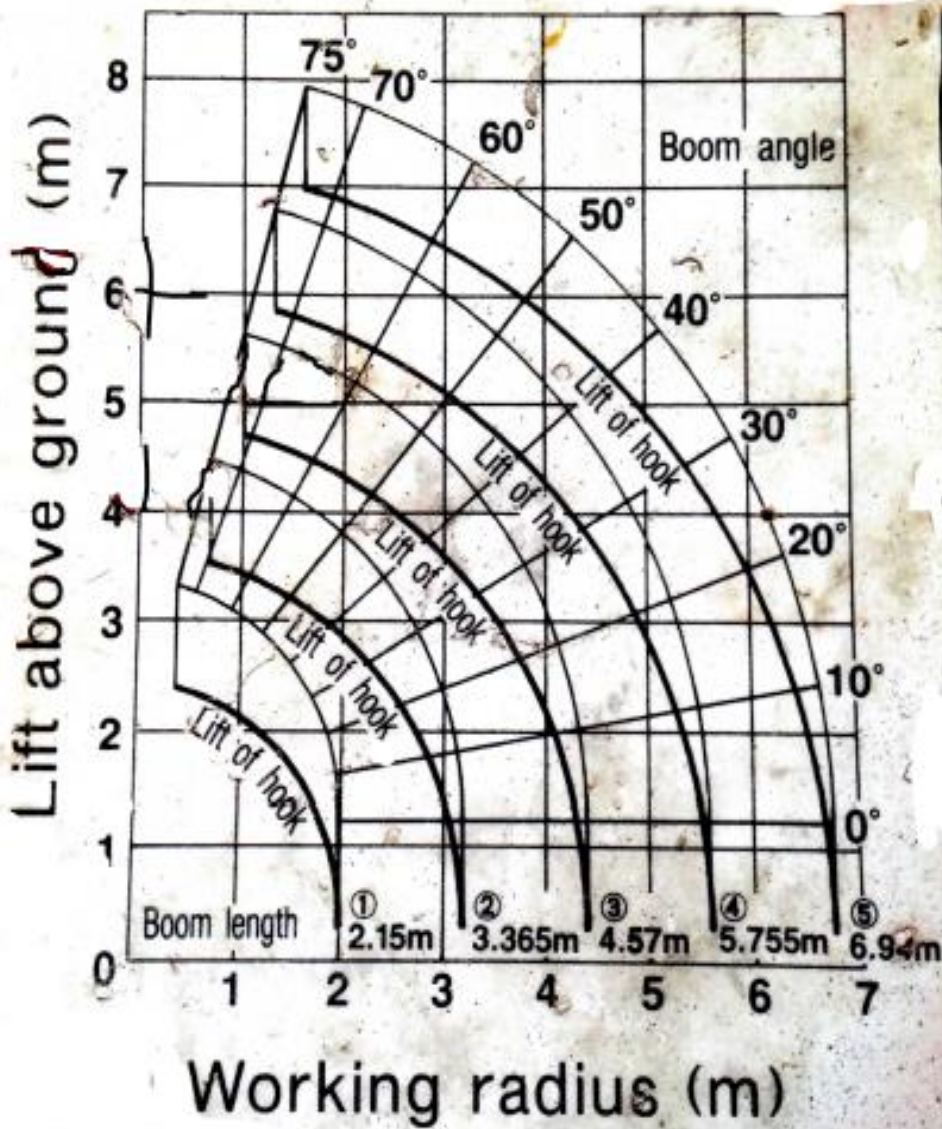
**NEWLY DEVELOPED**  
**HIGH POWER 2.5 TONNE CAPACITY**



*Out Riggers Stretched To Their Outermost Position*

***Goes through doorways,  
 into lifts and allmac***

# WORKING RANGE CHART



**Note.**

The working range chart refer to cranes in no-load condition. not including the deflection of the boom.

B-518796-255CA

## RATED LOAD

Operating condition of boom : ① or ①+②

Working radius (m)	1.0	1.5	1.8	2.0	2.5	3.0	3.185
Rated load (t)	2.5	2.5	2.1	1.9	1.5	1.0	0.85

Operating condition of boom : ①+②+③

Working radius (m)	2.0	2.9	3.0	3.5	4.0	4.39
Rated load (t)	1.2	1.2	1.07	0.7	0.5	0.4

Operating condition of boom : ①+②+③+④

Working radius (m)	3.0	3.6	4.0	4.5	5.0	5.575
Rated load (t)	0.7	0.7	0.55	0.41	0.33	0.25

Operating condition of boom : ①+②+③+④+⑤

Working radius (m)	3.5	4.0	4.5	5.0	5.5	6.0	6.76
Rated load (t)	0.41	0.41	0.35	0.3	0.26	0.23	0.17

### Note:

1. When operating the crane, be sure to extend outriggers fully. Remember that stability of the crane deteriorates remarkably if the outriggers are not extended to their maximum.
2. The rated loads specified above are based on the strength of the crane and the stability of the crawler.
3. When the outriggers are set without extending to their maximum, stability of the crane deteriorates remarkably.  
Take special care because it is possible for the crane to be overturned by lifting the cargo with less than the rated load.

B-518795-255CA