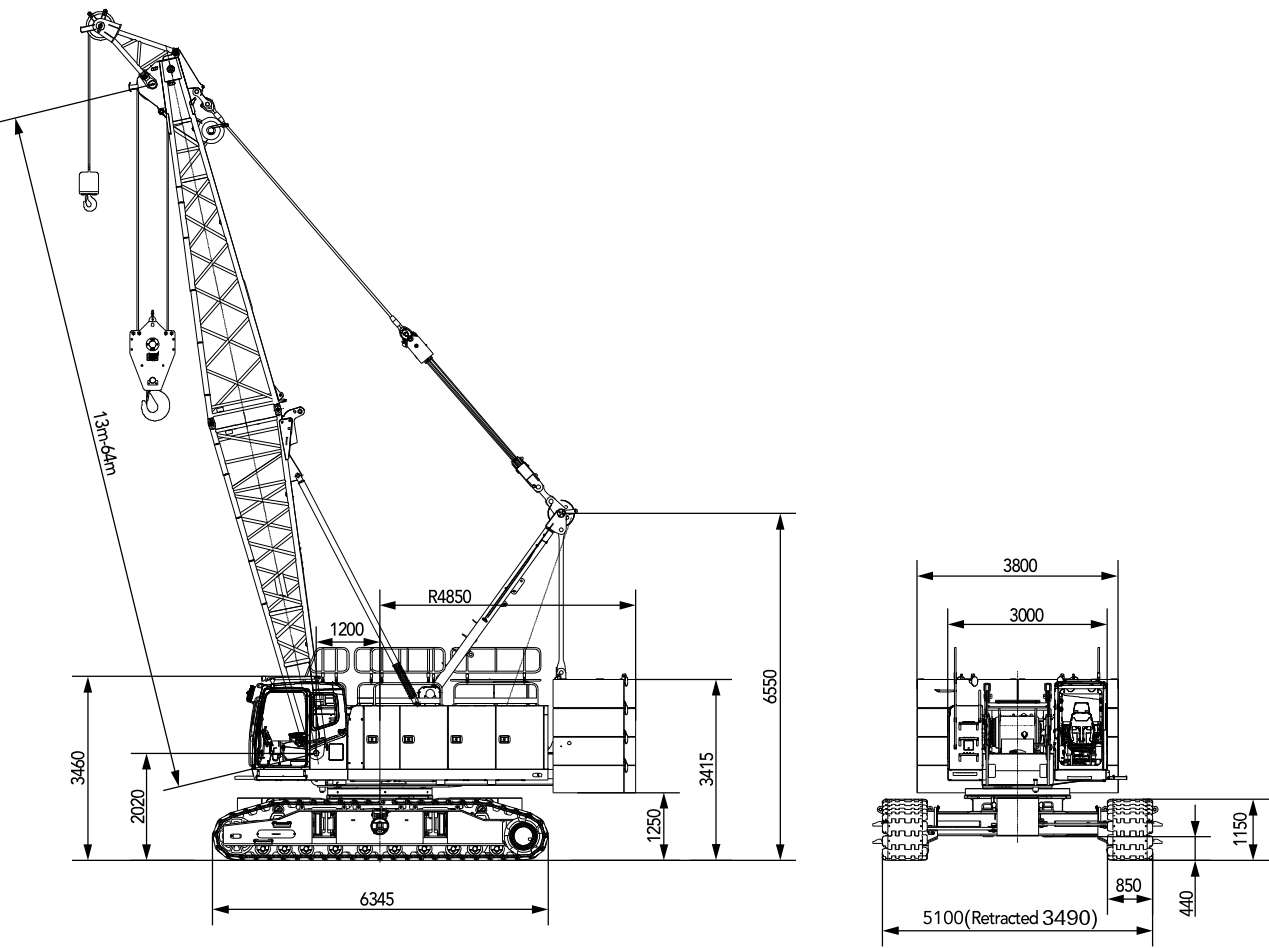
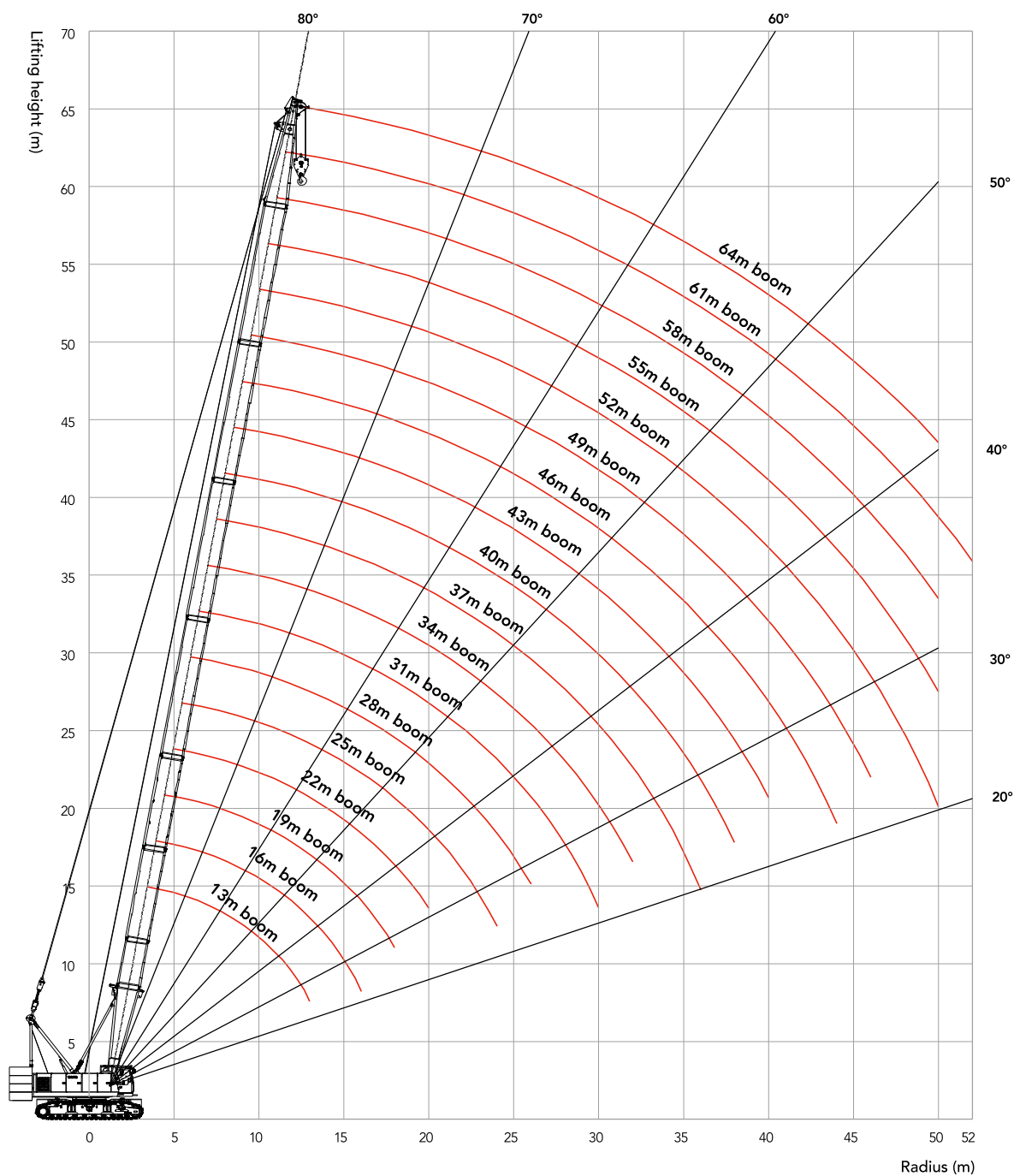


Unit: mm

Outline Dimension



Working Radius in H Configuration



Load Chart of H Configuration

Notes: Rated capacity of crawler crane:

- ① . 1. The rated load in the load chart is calculated complying with EN13000.
- ② . The rated capacity in the load charts is calculated when the crane is parking on firm and level ground and lifting the load slowly and steadily.
- ③ . The rated capacity values in the load charts are only valid when wind speed is lower than 9.8 m/s.
- ④ . The rated capacity in the load charts includes the weight of lifting hook, etc.; therefore, the actual rated capacity is the value after deducting the weight of lifting tools (such as lifting hook), from the rated load in the load charts.
- ⑤ . The crawlers must be extended during lifting.
- ⑥ . The values in the load charts are valid for 360° slewing.
- ⑦ . Values shaded in dark gray are determined by strength.
- ⑧ . See Operation Manual for load charts of HCm and HCa configurations.

Load chart -H 1/2

Rear counterweight 33t, Carbody counterweight 11t

R(m) \ BL(m)	13	16	19	22	25	28	31	34	37	BL(m) \ R(m)
3.8	100									3.8
4	95									4
4.5	88	85								4.5
5	77	75	73.5							5
5.5	71	70	69	68.1						5.5
6	65.1	64.1	63.1	62.1	60.2					6
6.5	58.1	57.5	57.1	56.2	55.2	53.1				6.5
7	52.1	51.8	51.6	51.3	50.3	48.5	47			7
7.5	47.1	46.8	46.6	46.4	46.2	45.2	43.5	42		7.5
8	43	42.7	42.5	42.4	42.1	41.9	41	39	38	8
9	36.5	36.3	36.1	36	35.7	35.6	35.4	34.9	33.8	9
10	31.7	31.5	31.3	31.2	31	30.8	30.7	30.4	30.3	10
11	28	27.7	27.6	27.5	27.3	27.1	27	26.8	26.6	11
12	25	24.8	24.7	24.5	24.3	24.2	24.1	23.8	23.7	12
13	22.6	22.4	22.2	22.1	21.9	21.8	21.6	21.4	21.3	13
14		20.3	20.2	20.1	19.9	19.8	19.6	19.4	19.3	14
15		18.6	18.5	18.4	18.2	18.1	18	17.7	17.6	15
16		17.2	17.1	17	16.7	16.6	16.5	16.3	16.2	16
18			14.7	14.6	14.4	14.3	14.1	13.9	13.8	18
20				12.8	12.5	12.4	12.3	12.1	12	20
22					11	11	10.8	10.6	10.5	22
24					9.8	9.7	9.6	9.4	9.3	24
26						8.7	8.6	8.4	8.3	26
28							7.8	7.5	7.5	28
30							7.1	6.8	6.7	30
32								6.2	6.1	32
34									5.5	34
36									5	36